



GREENGAGE - Promoting innovative governance and helping public authorities in shaping their climate mitigation and adaptation policies by engaging with citizens via Citizen Observatories

Peters-Anders, Jan

Austrian Institute of Technology - AIT



GREENGAGE



Learn more here, soon:
greengage-project.eu
(not online, yet)



Project numbers



EU contribution € 3,588,499 (+ € 2 Million from APs)

Grant agreement ID: 101086530

17 Participants, Innovation Action

Funded under: Food, Bioeconomy Natural Resources, Agriculture and Environment

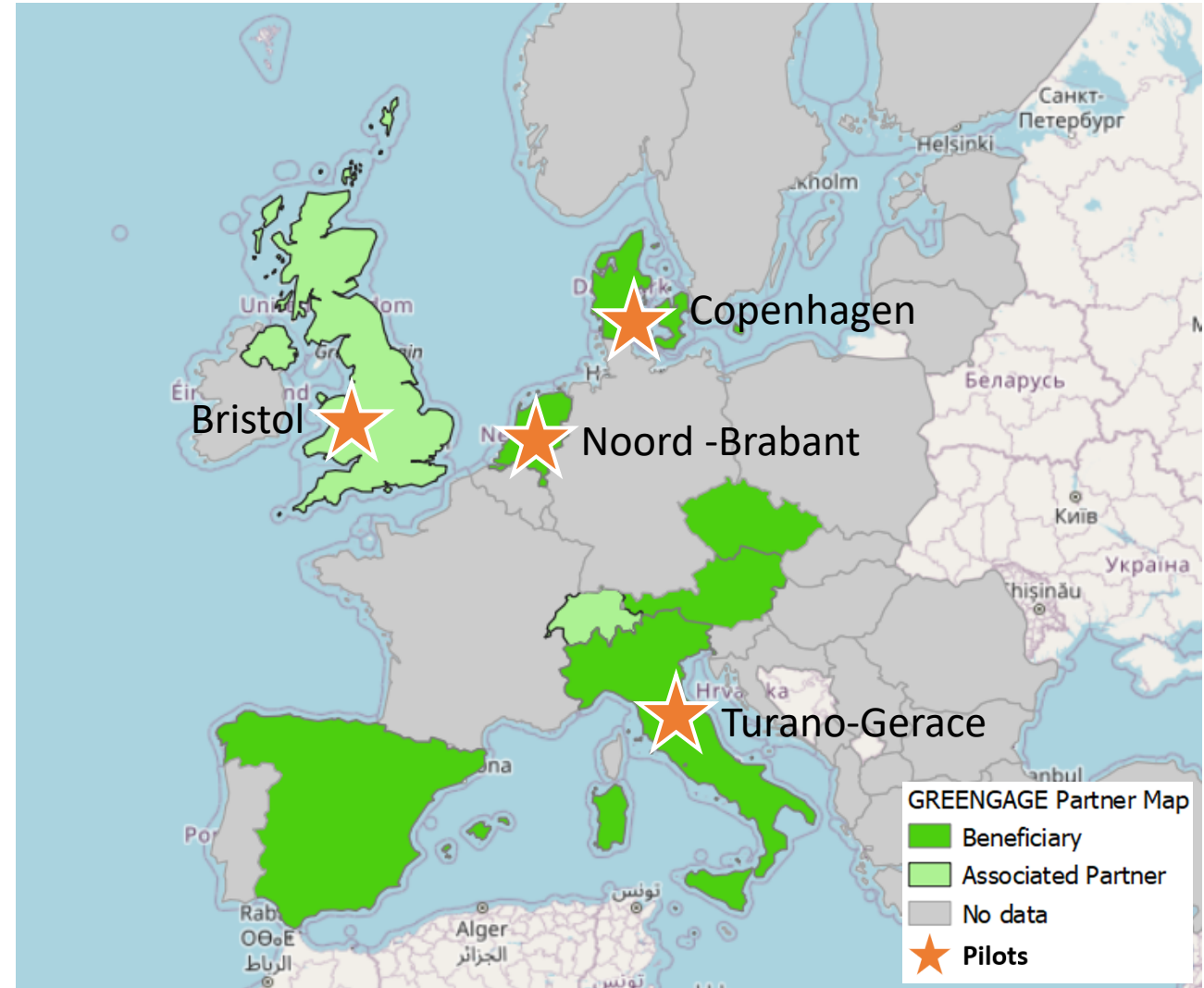
HORIZON-CL6-2022-GOVERNANCE-01-08 - Uptake and validation of citizen observations to complement authoritative measurement within the urban environment and boost related citizen engagement

Start date 1 January 2023

- the project has not started yet

End date 31 December 2025

- 36 months



Administrative boundaries: © [EuroGeographics](#) 2022

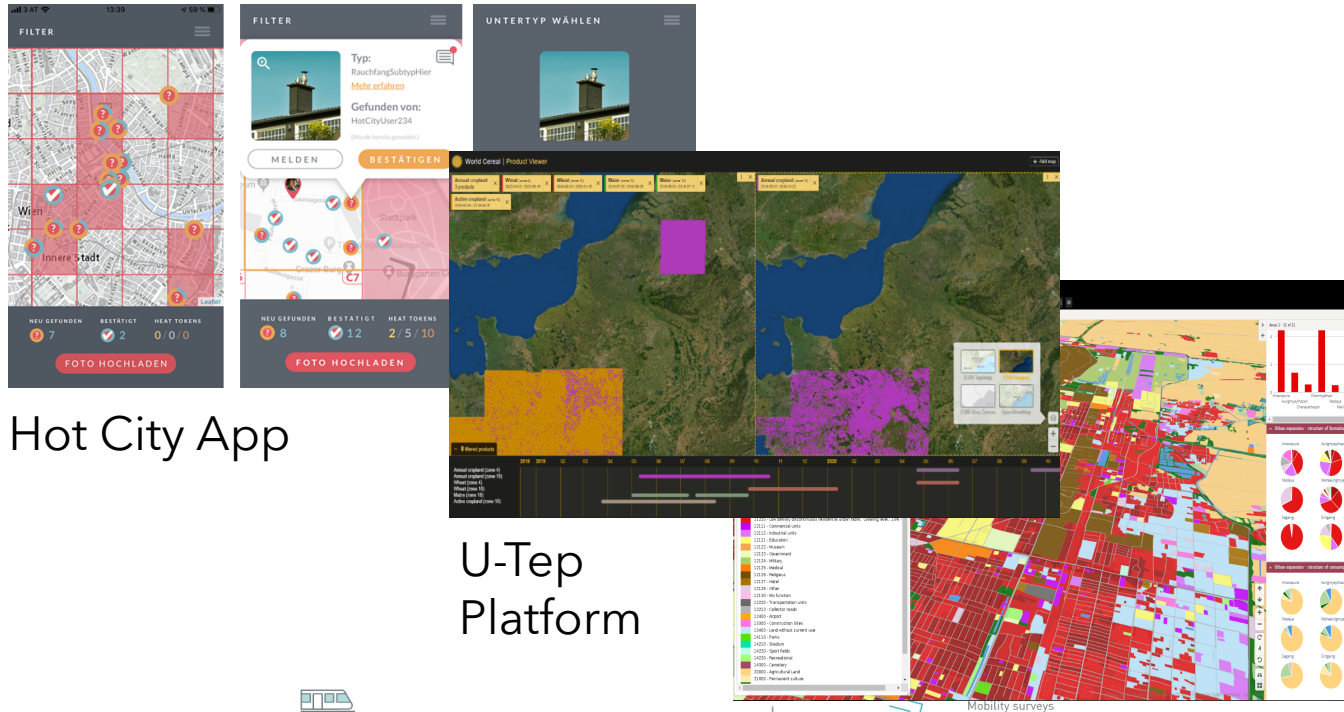
Basemap: © OpenStreetMap contributors



Aim of the project

- 1. Enhancement of intelligence applied to city decision making process and governance** by engaging with citizen observations integrated with Copernicus (services CAMS, CLMS, C3S), GEOSS, in-situ and socio-economic intelligence, and delivered by innovative governance models based on novel toolboxes of decision-making methodologies and technologies.
- 1. Harnessing the social and cultural opportunities to promote the active engagement of citizens via COs** in the collection and use of urban decision-making intelligence support.

EUROGEO WORKSHOP 2022



Hot City App

U-Tep Platform

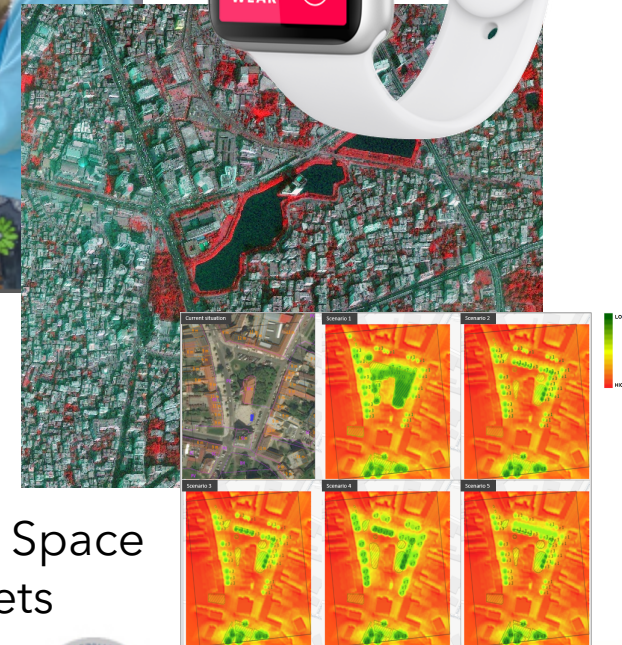


Mind Earth: Person Mounted 360° camera

Wearable Sensors



MODE: Travel Mode Detection



Public Space Datasets

ATHENS 7-9 DECEMBER 2022



GREENGAGE's Key Exploitable Results (1/2) - What to expect?

KER1: The GREENGAGE CO Academy

A **knowledge base** to store and index training materials, MOOCs, success stories, findings and best practices collected from the four CO pilots.

KER2: The GREENGAGE CO Methodology

A co-creation driven **thematic data workflow experiment incubation approach**, including supporting materials to reach, engage, involve, and educate citizens in performing observational and co-creation activities to tackle the full potential of citizen creativity and increase responsible and informed decision making.

KER3: GREEN Engine and toolbox

An **ESA's Urban-TEP based infrastructure complemented with a wide assortment of tools** to facilitate the data (Copernicus and in-situ) to policy lifecycle outward (for designing new policies) and inward journey (for validation of existing or refined policies) and a co-creation approach for multi-stakeholder engagement in citizen observation experiments.



GREENGAGE's Key Exploitable Results (2/2) - What to expect?

KER4: GREENGAGE Citizen Observatories

With the support of the knowledge base provided by GREENGAGE Academy (KER 1), **KER 4 is the GREENGAGE co-creation methodology to devise feasible and sustainable citizen science experiments**, its supporting GREEN Engine and interoperable and extensible toolbox covering the whole data to policy lifecycle.

KER5: A White Book for uptake and scale up of Citizen Observatories

Lessons learnt in the application of GREENGAGE Citizen Observatories enabling methodology, engine and associated tools to realize representative Green Deal will be drawn. This will lead to a suite of recommendations generated for selecting challenges appropriate for CO projects and for setting up new CO projects to duplicate successful GREENGAGE approaches and develop new CO projects to increase and accelerate citizen awareness and co-creation of solutions for fostering sustainable behaviour change and raise acceptance of climate action measures with special attention to historically disadvantaged populations.



PARTNER CONTRIBUTIONS

CO FRAMEWORK ANALYSIS (WP2)

Lead partner: UWE
Partner: KWMC, IBERCIVIS, UWE, BUAS, DEUSTO, AIT, VRVis, Pilots

CO DESIGN (WP3)

Lead partner: KWMC, Partner: all

CO INFRASTRUCTURE AND TOOLBOX (WP4)

Lead partner: DEUSTO
Partner: DEUSTO, AIT, SushiDev, GISAT, MindEarth, VRVis, BUAS, DSR, UWE, HOPU

CO PILOTING (WP5)

Lead partner: IBERCIVIS, Partner: all

EVALUATION (WP6)

Lead partner: AIT, Partner: all

DISSEMINATION (WP7)

Lead partner: VRVis, Partner: all

KEY EXPLOITABLE RESULTS

KER1: GREENGAGE CO Academy

KER2: GREENGAGE CO Methodology

KER3: GREEN Engine and toolbox

KER4: GREENGAGE Citizen Observatories

KER5: White Book for uptake and scale up of CO

Other relevant results:

CO monitoring solutions
Citizen engagement
Citizens widespread participation
Greater availability of in-situ data
Increased use of data collected by citizens

TARGET GROUPS

Citizens

General public, Marginalized groups
Women, Minorities

Cities

Governance, Administration

Civil Society

Initiatives, Environmental Agencies
Activists, NGOs

Business

Industry Investors, Businesses

Citizen Observatory Experts

Academic
Non-academic (SMEs)
Education/Training





Scientific Community

City Challenge topics
Education

EUROGEO WORKSHOP 2022



GREENGAGE Pilots

Pilot	Scale	Challenge	Governance innovation	Impact
Copenhagen 	District / Neighbourhood	Create a sustainable and thriving neighbourhood	Co-Creation with citizens, investors and public bodies to accelerate sustainable change	Realisation of 15 minute city solutions
Bristol 	Neighbourhood	Enhance quality of life + reduce GHG emissions	Empowerment through digital engagement	Promotion of liveable neighbourhoods
Turano - Gerace 	Rural Community	Reverse rural depopulation with new opportunities for remote working	Promotion of Integration of rural - urban dependencies	Creation of viable solutions for rural depopulation
North-Brabant 	City-Region	Promote city-region mobility	Enhanced decision-making promoted by digital twin engagement	Enhanced mobility efficiency with infrastructure and investment optimisation

ATHENS 7-9 DECEMBER 2022



GREENGAGE Pilots and their Challenges

Turano - Gerace, Italy

Scale: Turano valley / Municipality of Gerace

Green Deal Areas: increase climate ambition, empower citizens

Groups to be addressed:

- people who live in 'home-working' cities

Data challenge:

- Data challenge in relation to urban regeneration; requirement for a holistic and integrated approach that addresses the need for combined assessment of the socio-economic and environmental components of sustainable development.
- Regenerative actions must respond to the fragile balances in the community environment developed over centuries and which retain a high level of a value linked to both traditions and intangible heritage.



Noord-Brabant, The Netherlands

Scale: Region of Noord-Brabant

Green Deal Areas: sustainable and smart mobility, increase climate ambition, empower citizens

Groups to be addressed:

- citizens within 21 regional communities

Data challenge:

- Need for a representative and current GPS-dataset to monitor transition towards sustainable travel behaviour
- More effective use of newly available (open source and company) data on land use and environment, currently not used to full potential
- Lack of a systematic approach to combining citizens observations with data in the DT



Bristol, UK

Scale: Neighbourhood

Green Deal Areas: increase climate ambition, sustainable and smart mobility, zero-pollution environment

Groups to be addressed:

- Inclusive and more focus on historically under-represented groups

Data challenge:

- Existing gaps in data can be addressed using new tools and technologies in help build the case for change.
- Data that is currently not developed but would have great potential: unreported and near miss collision, tree canopy cover, actual and perceived safety, overheating and parking (e.g., density and infringements).



Copenhagen, Denmark

Scale: District of Copenhagen

Green Deal Areas: increase climate ambition, sustainable and smart mobility, empower citizens

Groups to be addressed:

- Employees who commute

Data challenge:

- Engagement through data, as citizens' collection of air exposure data will work to heighten the overall knowledge
- Using wearables the data set will provide average exposure per mode of transport, and the importance of choice of route will be documented to participants





GREENGAGE Pilots and their Challenges

Bristol, UK

Scale: Neighbourhood

Green Deal Areas: increase climate ambition, sustainable and smart mobility, zero-pollution environment

Groups to be addressed:

- Inclusive and more focus on historically under-represented groups

Data challenge:

- Existing gaps in data can be addressed using new tools and technologies in help build the case for change.
- Data that is currently not developed but would have great potential: unreported and near miss collision, tree canopy cover, actual and perceived safety, overheating and parking (e.g., density and infringements).



EUROGEO WORKSHOP 2022



GREENGAGE's Technology Offer

IMPACT ASSESSMENT

GREEN DEAL AREAS

ENGAGEMENT METHODS & TECHNOLOGIES

CITIZEN OBSERVATORIES

TURANO – GERACE

Urban revitalization



Reduce
Emissions



Journey
Safety

BRISTOL

Liveable neighbourhoods



Collaborate with
City Environmental
Objectives

NOORD-BRABANT

Transition to sustainable mobility



Active and
Sustainable
Mobility



Urban
Planning 15'
Cities

COPENHAGEN

Healthy cities and improved air quality



Mobility
Environmental
Impact



Sustainable
Logistics



Personalised
recommendation



DLT-based
social coins



CO2
Analytics



Behaviour
change
instruments



Personal
analytics
dashboard



Mobility-
footprint
monitoring



Citizen
science
app



TTM-based
profiling
module



Existing Datasets



City Sensors



Citizens Ideas



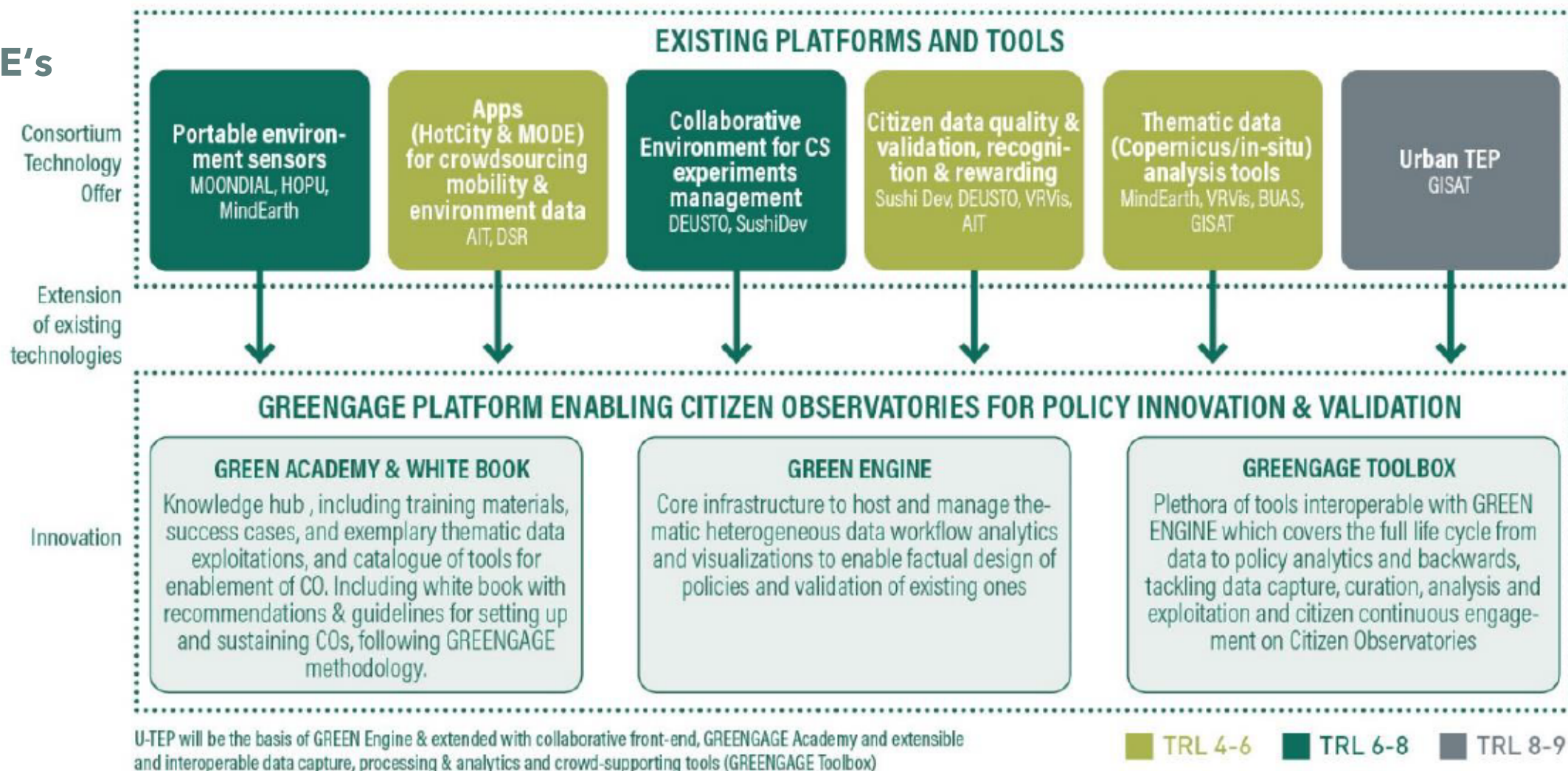
Living Labs

● Offered technologies ■ Pilots ● Piloting Cities & Regions

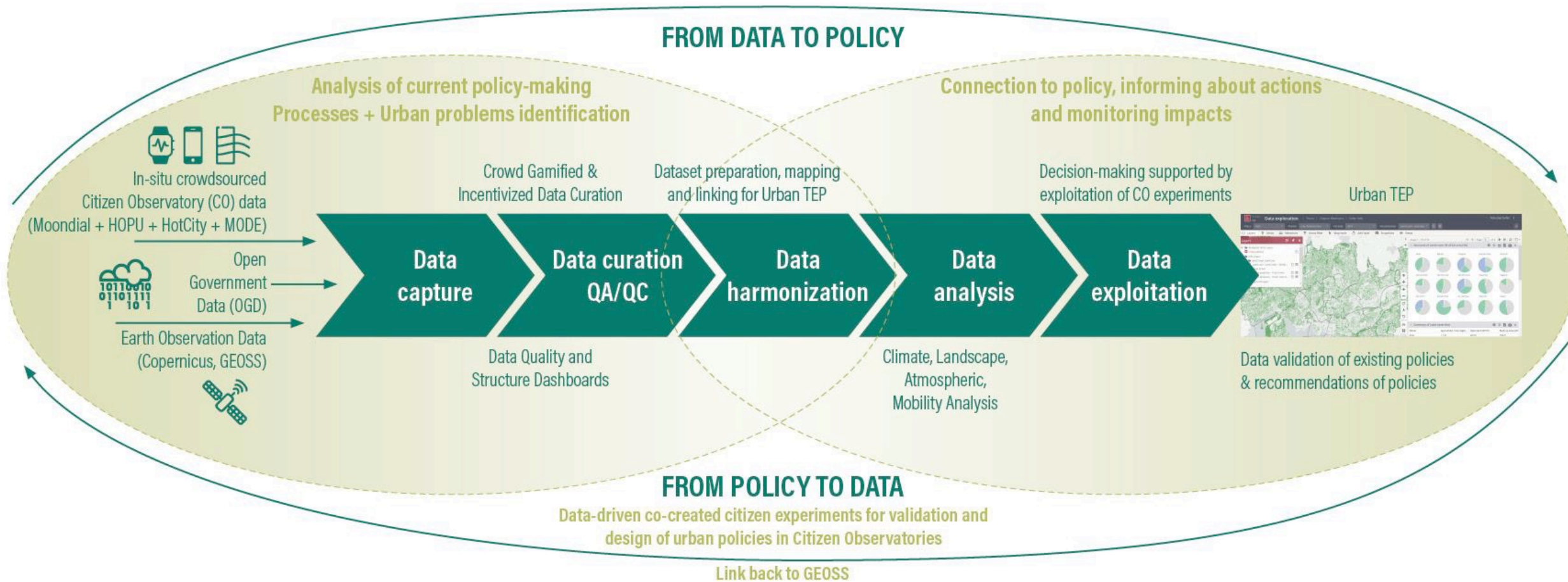
ATHENS 7-9 DECEMBER 2022



GREENGAGE's Existing Platforms & Tools to build upon



ATHENS 7-9 DECEMBER 2022





Q&A

Contact: AIT - Austrian Institute of Technology

Project Coordinator: Jan Peters-Anders (jan.peters-anders@ait.ac.at)



Pilots:

- Bristol City Council (Pilot: Bristol (BCC))
- I Borghi Più Belli D'Italia (Pilot: Turano Gerace (Borghi Italia))
- Miljopunkt Amager (Pilot: Copenhagen (MPA))
- Noord-Brabant Provincie (Pilot: North-Brabant (PNB))

CS Partners:

- Fundacion Ibercivis (IberCivis)
- Knowle West Media Centre LBG (KWMC)

SMEs:

- DigitalSunray Media GmbH (DSR)
- GISAT S.R.O. (GISAT)
- Hop Ubiquitous SI (HOPU)
- MindEarth
- Moondial GmbH
- Sushi Dev KG (SuhsiDev)

Scientific Partners:

- AIT - Austrian Institute of Technology
- Stichting Breda University Of Applied Sciences (BUAS)
- Universidad de la Iglesia de Deusto Entidad Religiosa (DEUSTO)
- University of the West of England (UWE)
- VRVis Zentrum für Virtual Reality und Visualisierung Forschungs-GmbH (VRVis)