



NATURE FIRST

Sonja van Meerbeek

Sustainable Scale-up Foundation



Learn more here:



8 DEC 2022



NATUREFIRST

PROJECT PITCH

SUSTAINABLE SCALE UP FOUNDATION



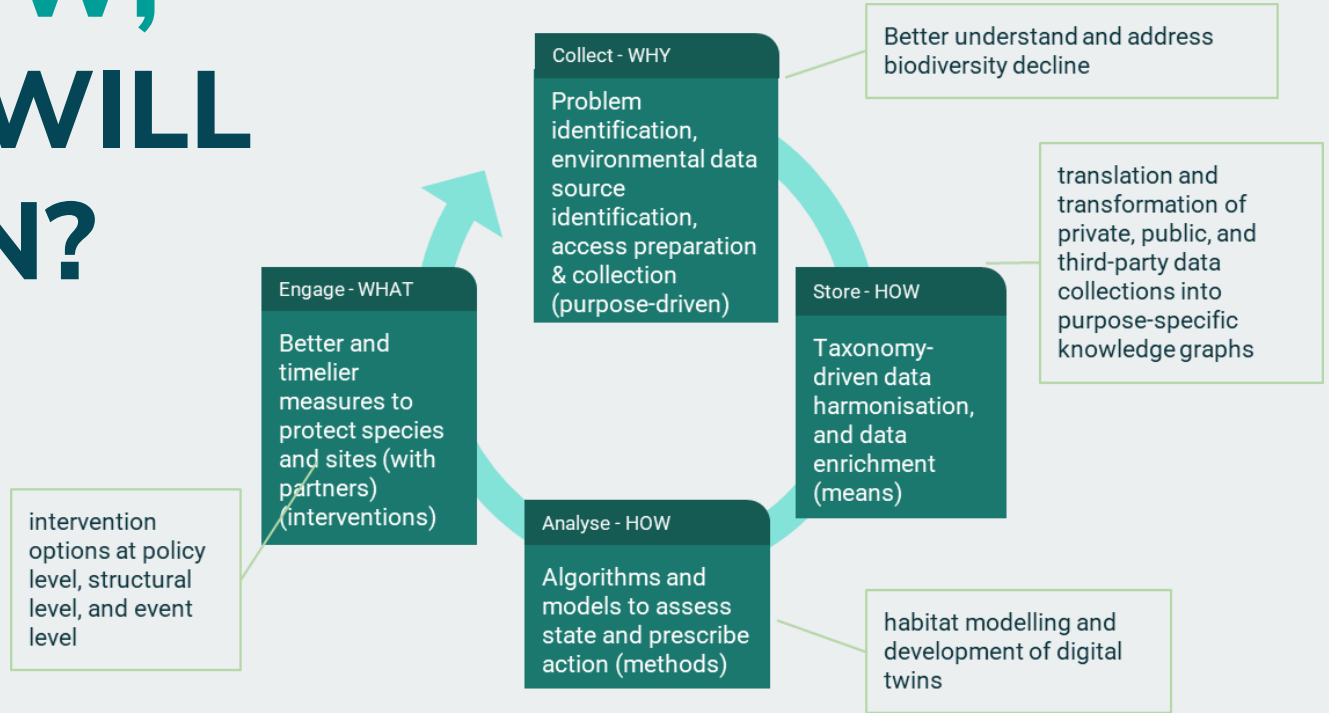
OUR SCOPE

The overall aim is to halt and **reverse** the **decline of biodiversity in Europe**.

To achieve this we need to move from reactive to **proactive**, from restoration to **prevention** and thus turning real-time data into **intelligence and facts**.

Our overall objective therefore is to develop **predictive and preventive capabilities for nature conservation** and law enforcement authorities, combining forensic intelligence and remote sensing technologies into one tool suite.

IF WE DON'T ACT NOW, WHAT WILL HAPPEN?



CONSORTIUM PARTNERS



SENSING CLUES

THE NETHERLANDS

We help nature conservation professionals with data-driven solutions to protect, manage and nurture nature.

[WEBSITE](#)



WILDLIFE FORENSIC ACADEMY

SOUTH AFRICA

The Wildlife Forensic Academy is nature's game changer and a preeminent voice in the mobilisation of wildlife forensic knowledge.

[WEBSITE](#)



WAGENINGEN UNIVERSITY & RESEARCH

THE NETHERLANDS

We specialise in life sciences with a focus on agriculture, technical and engineering subjects.

[WEBSITE](#)



STAFFORDSHIRE UNIVERSITY

ENGLAND, UNITED KINGDOM

The 2021 Research Excellence Framework (REF) classed 68% of the research at Staffordshire University as world leading or internationally excellent.

[WEBSITE](#)



WORLD WILDLIFE FUND

ROMANIA & UKRAINE

World Wildlife Fund is the leading organization in wildlife conservation and endangered species.

[WEBSITE](#)



3EDATA

SPAIN

We are a technology-based company that offers engineering solutions based on the collection and analysis of environmental data.

[WEBSITE](#)



SEMANTIC WEB COMPANY

AUSTRIA

The Semantic Web Company (SWC) is a technology provider and that supports organizations worldwide in improving their data, information and knowledge management.

[WEBSITE](#)



DOTSPACE

THE NETHERLANDS

DotSPACE is a not-for-profit foundation publicly funded and helping to accelerate the space ecosystem of the Netherlands and promoting space data applications.

[WEBSITE](#)



SUSTAINABLE SCALE-UP FOUNDATION

THE NETHERLANDS

Sustainable Scale-Up Foundation (SSF) builds communities where companies can scale-up: their innovators and positively impact the world together.

[WEBSITE](#)



DANUBE DELTA NATIONAL INSTITUTE

ROMANIA

The Danube Delta National Institute for Research and Development (DDN) conducts fundamental and applied research for scientific support of the management of the Danube Delta Biosphere Reserve (DOB) and other wetland areas of national and international interest, with particular focus on biodiversity conservation and sustainable use.

[WEBSITE](#)



BULGARIAN ACADEMY OF SCIENCES

BULGARIA

The Bulgarian Academy of Sciences (BAS) is the top scientific organization of Bulgaria. It has 68 institutes, laboratories and other research units which carry out basic and applied research in the fields of the natural, technical and social sciences and the humanities.

[WEBSITE](#)

EXPECTED RESULTS

1

A tool to automatically create ecosystem base maps, including biotic, abiotic, natural and anthropogenic features.

2

A tool for automatic monitoring of ecosystems and evaluation of interventions.

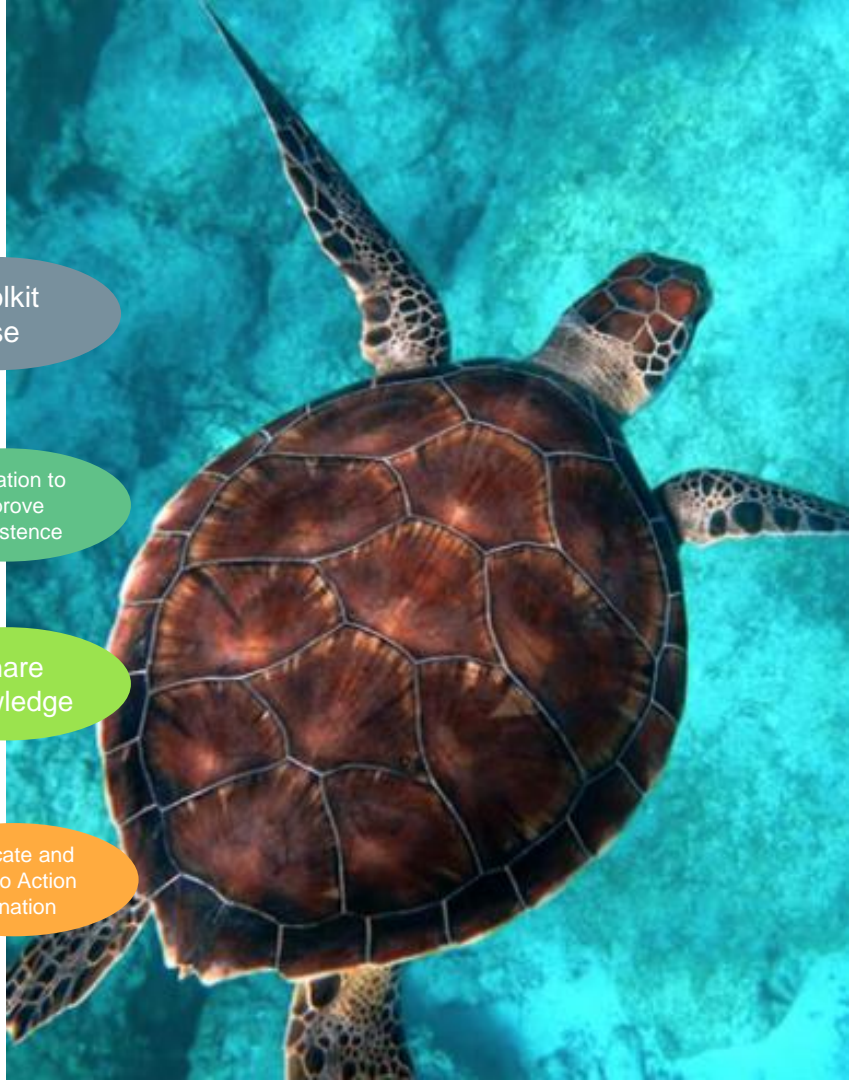
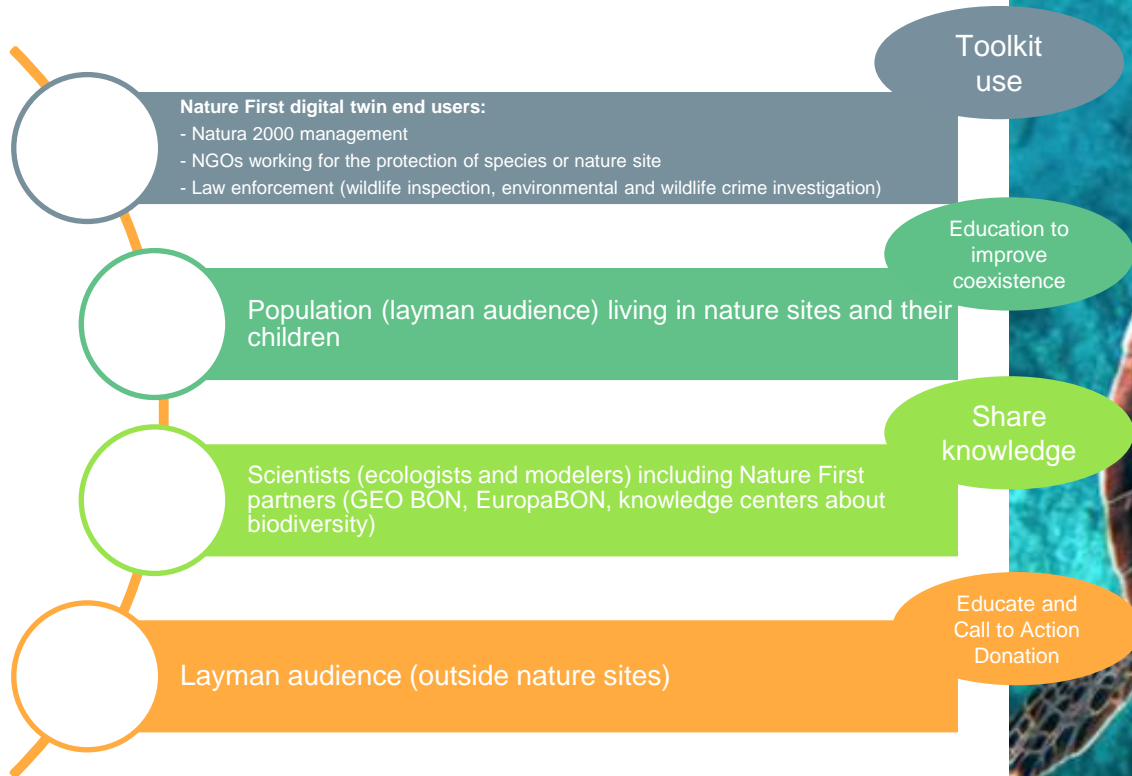
3

Digital twin models. The modelled ecological and anthropogenic processes serve as the codified body of knowledge to contextualise and interpret environmental observations.

4

Semantics-driven data methods and tools to harmonise taxonomies.

WHO ARE WE TARGETING?



THANK YOU