



Filling a
critical gap
for top-class
science at the
continental scale



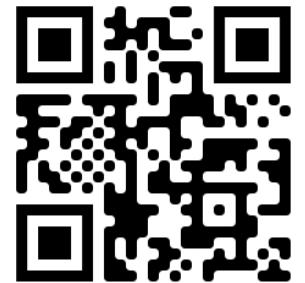
eLTER in a nutshell

Michael Mirtl

eLTER ESFRI coordinator
UFZ, Germany & EAA, Austria



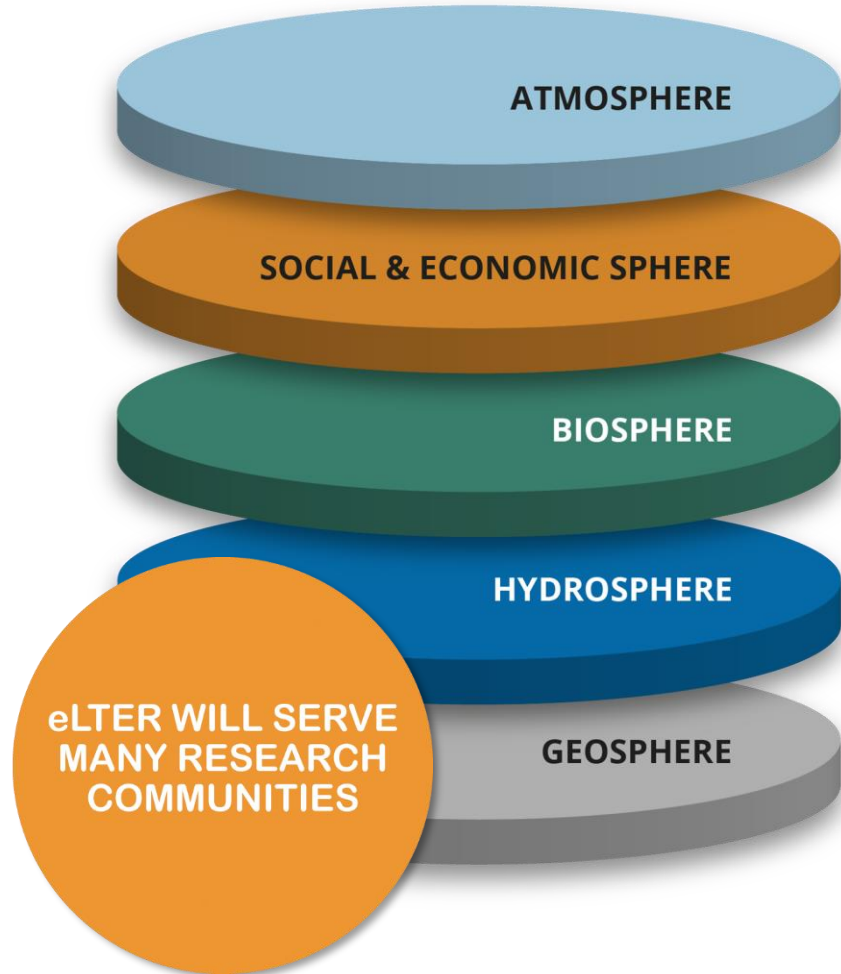
Learn more here:



ATHENS 7-9 DECEMBER 2022

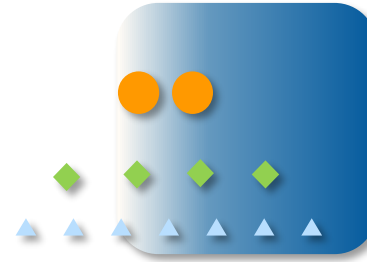
Core characteristic: „Whole System“-Approach

Cross-disciplinarity needed to understand systems functioning



DESIGN

- Hierarchy of Site categories



- Varying in complexity & costs

SERVICES

- Basic site infrastructure
- Sites as Digital Twins
 - Standard Observations on site
 - Multiple other data sources (RS, modelling)
- Data access
- Analytical tools, virtual labs
- Training etc.

Continuous long-term operation of ~200 innovative hubs

The eLTER Research Challenges and related policies

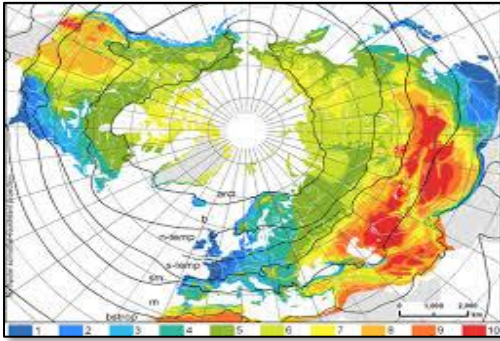
Biodiversity dynamics

EU Biodiversity Strategy, Water Framework Directive, Habitats Directive



Climate change

European Green Deal, Strategy on adaptation to Climate Change, UNFCCC Paris Agreement



Eutrophication and pollution

Water Framework Directive, UNECE-CLRTAP

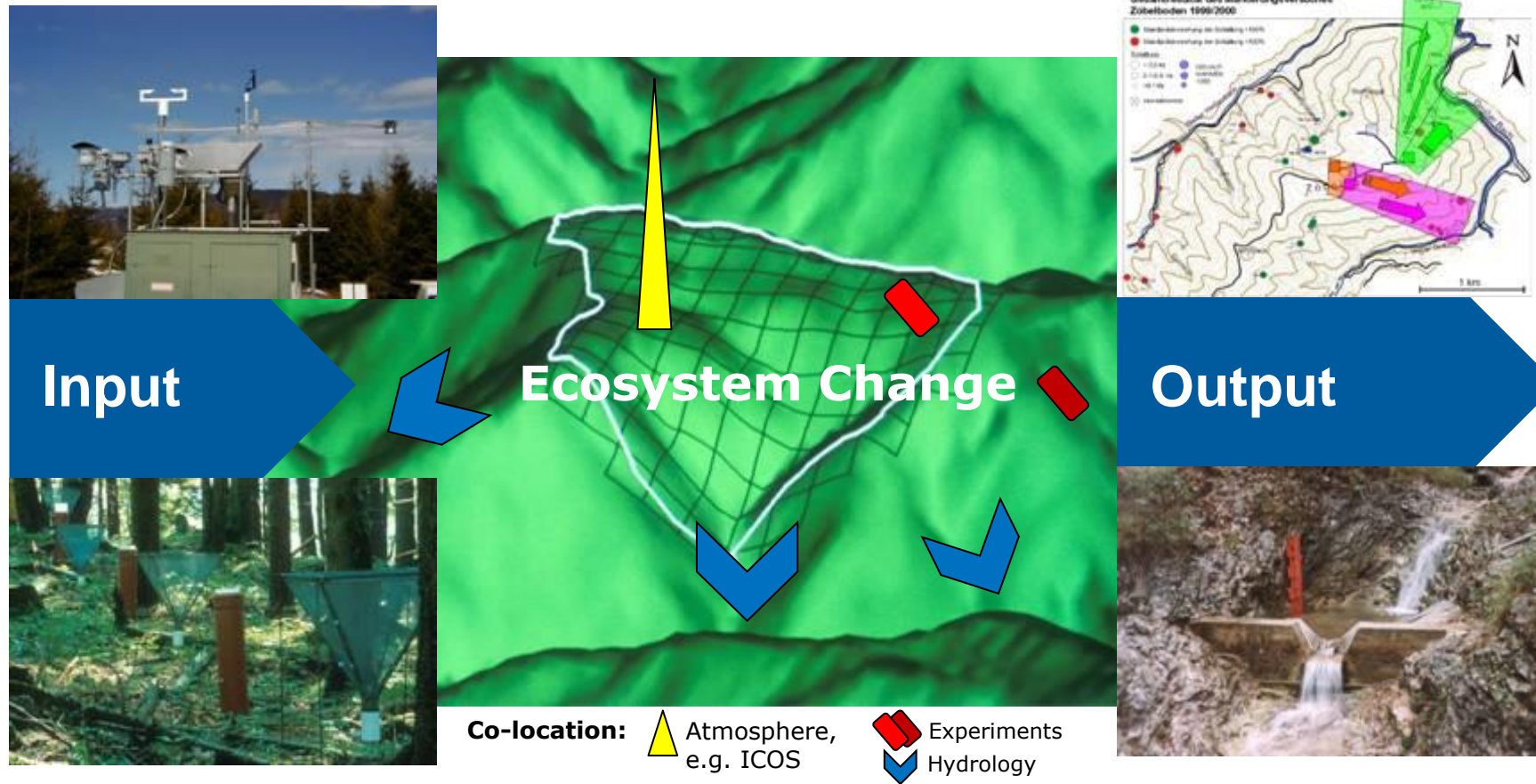


Socio-ecology - Environmental protection, sustainable management of natural resources, water, soils, biodiversity & ecosystems

CAP, Strategy on adaptation to Climate Change, Soils thematic strategy



Example for eLTER Site design, activities and co-location



Observed and investigated:

- System structure & functions
- Main drivers of change
- Slow onset processes & fast disturbances

eLTER ESFRI process: stakeholder support & coverage, 2022-12

ESFRI Roadmap 2018

SUPPORT

Political:

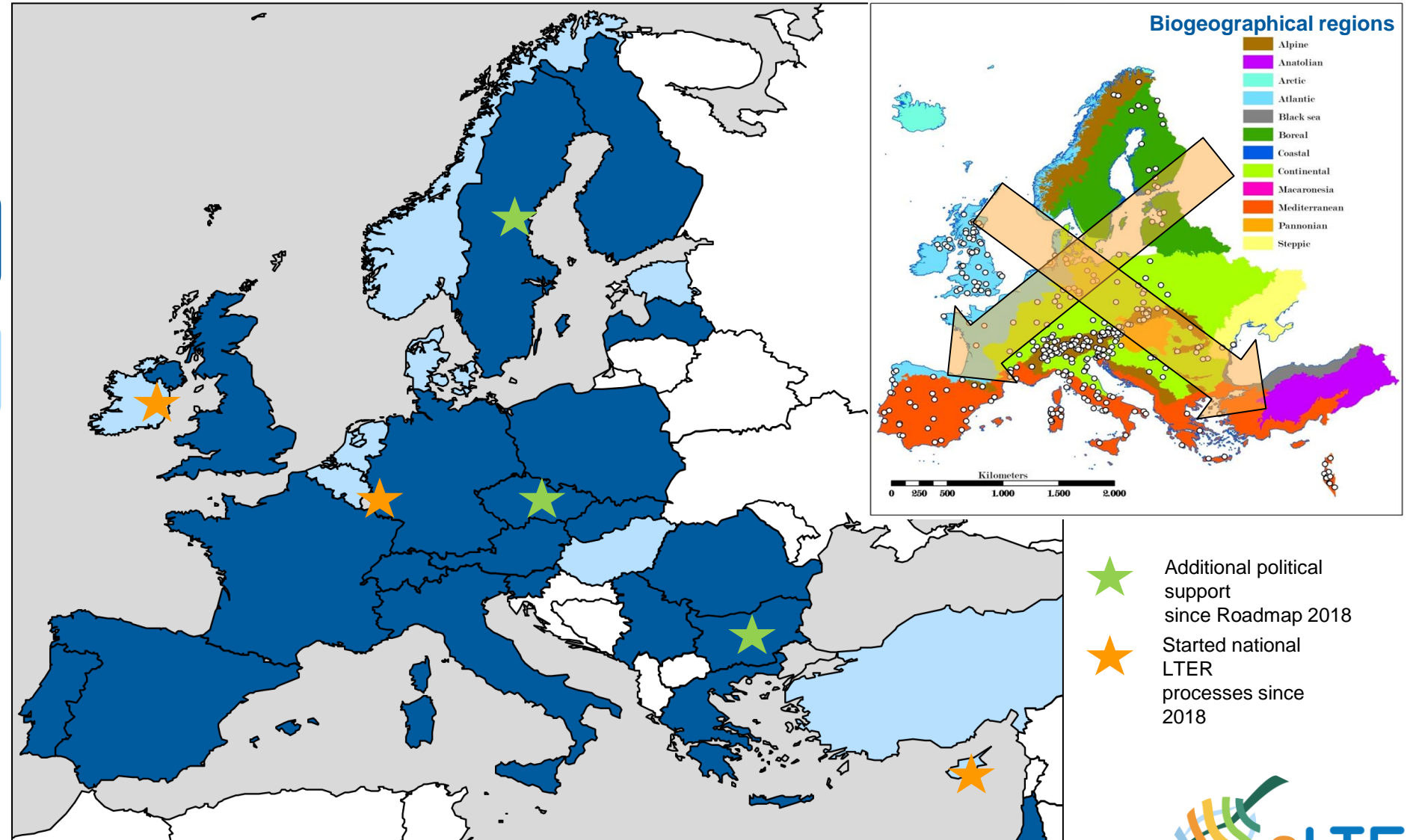
20 countries

Scientific institutions:

>165 [from 28 countries]

CAPITALIZING ON...

- 26 country networks
- >500 Sites
- >50 LTSE Platforms



Topic centres will collectively cover Thematic Service Areas

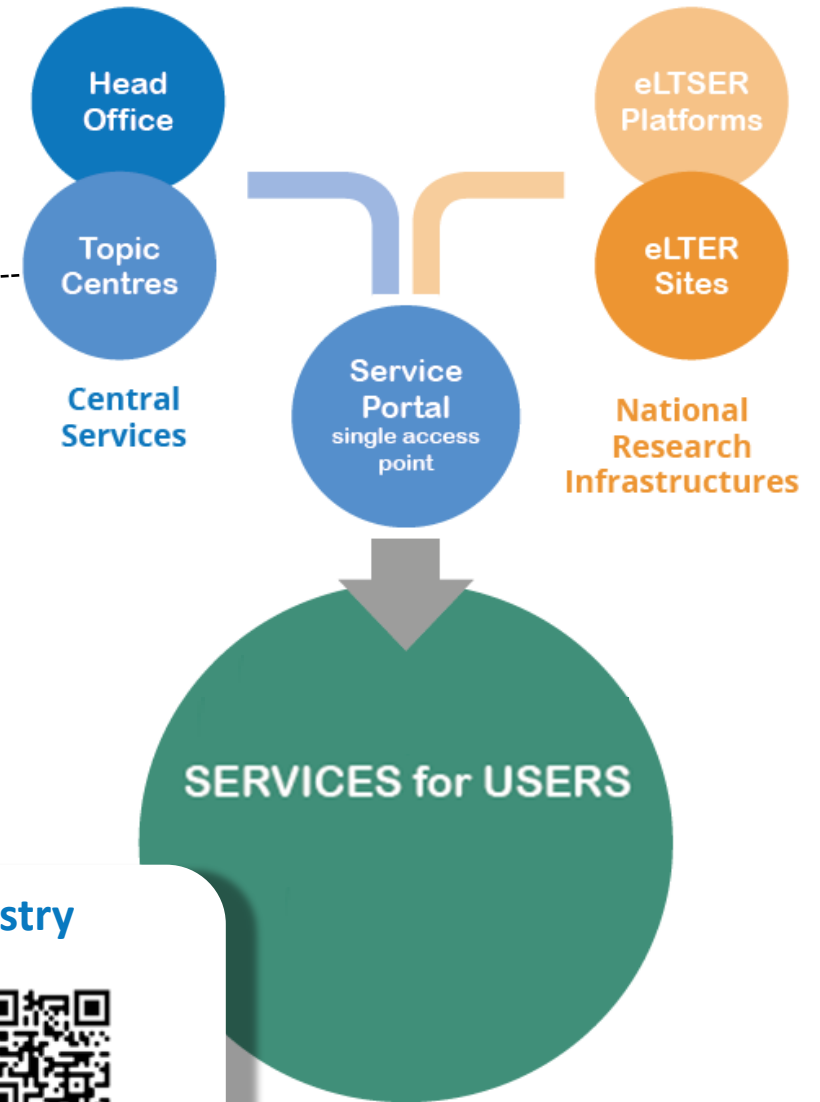
6 Thematic service areas

- Data management & integration (e.g. Site registry [DEIMS.org](https://deims.org))
- Optimised Design and RI Interoperability
- Technological Innovation & Development
- Analysis Tools and Modelling
- Synthesis towards actionable knowledge
- Central analytics and observation

Operational example: Site registry



[DEIMS.org](https://deims.org)



The European LTER: www.elter-ri.eu



**If you want to go fast go alone,
if you want to go far go together.**

An old African proverb