



VITIGEOSS: Optimising resources for greater sustainability

Erwin Goor (REA Project Advisor)

On behalf of Rosa Araujo

EURECAT

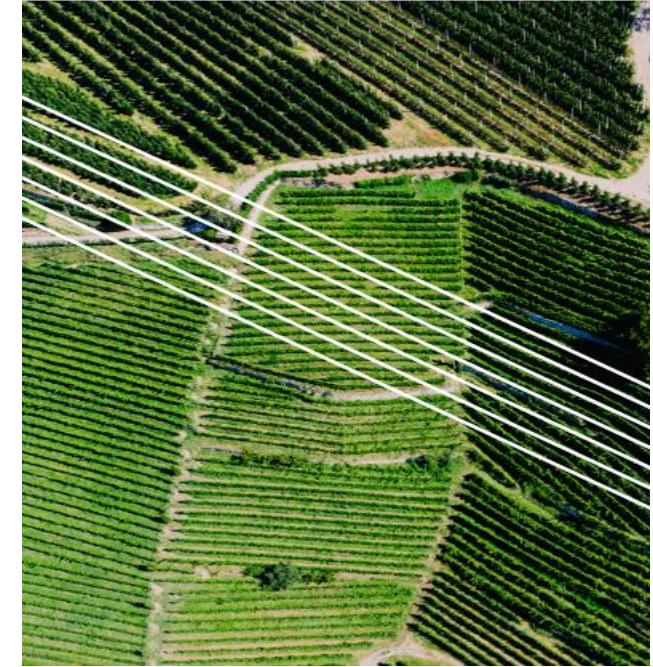


Learn more here:





Vineyard innovative tools based on the integration of Earth Observation services and in-field sensors





A one-stop entry solution for Smart Management

- Innovative vineyard management solution with Earth Observation services and in-field sensors
- Responsible wine production, less chemical fertilisers & pesticides, and better management & optimisation of resources





Weather and Climate services

Valid for Nov 2022, issued on 01 Oct 2022



● Above normal

● Normal

● Below normal

Probability

● 50-100%

● 34-49%

Extremes

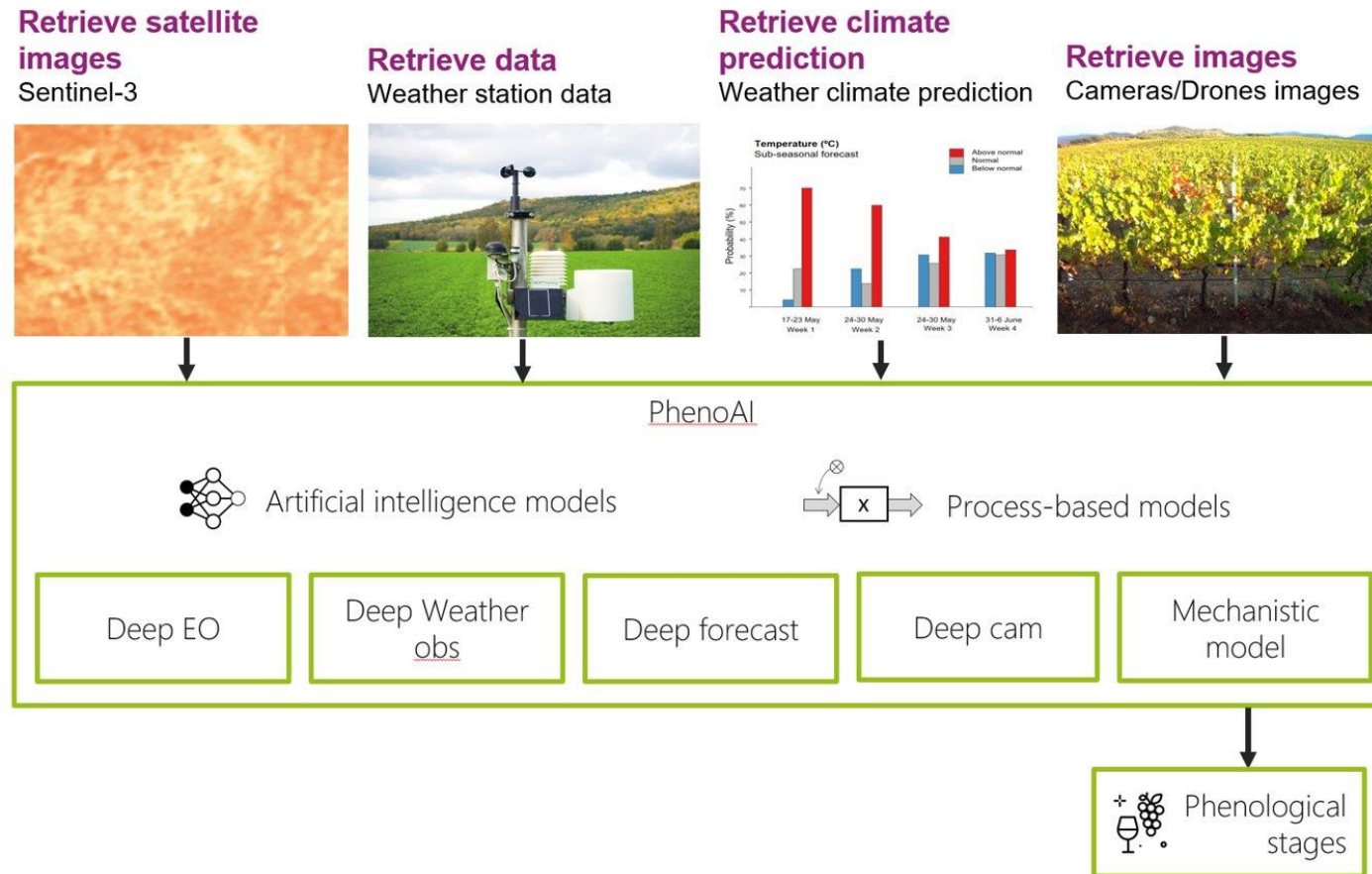
▲ Upper extreme

▼ Lower extreme

+ Site location

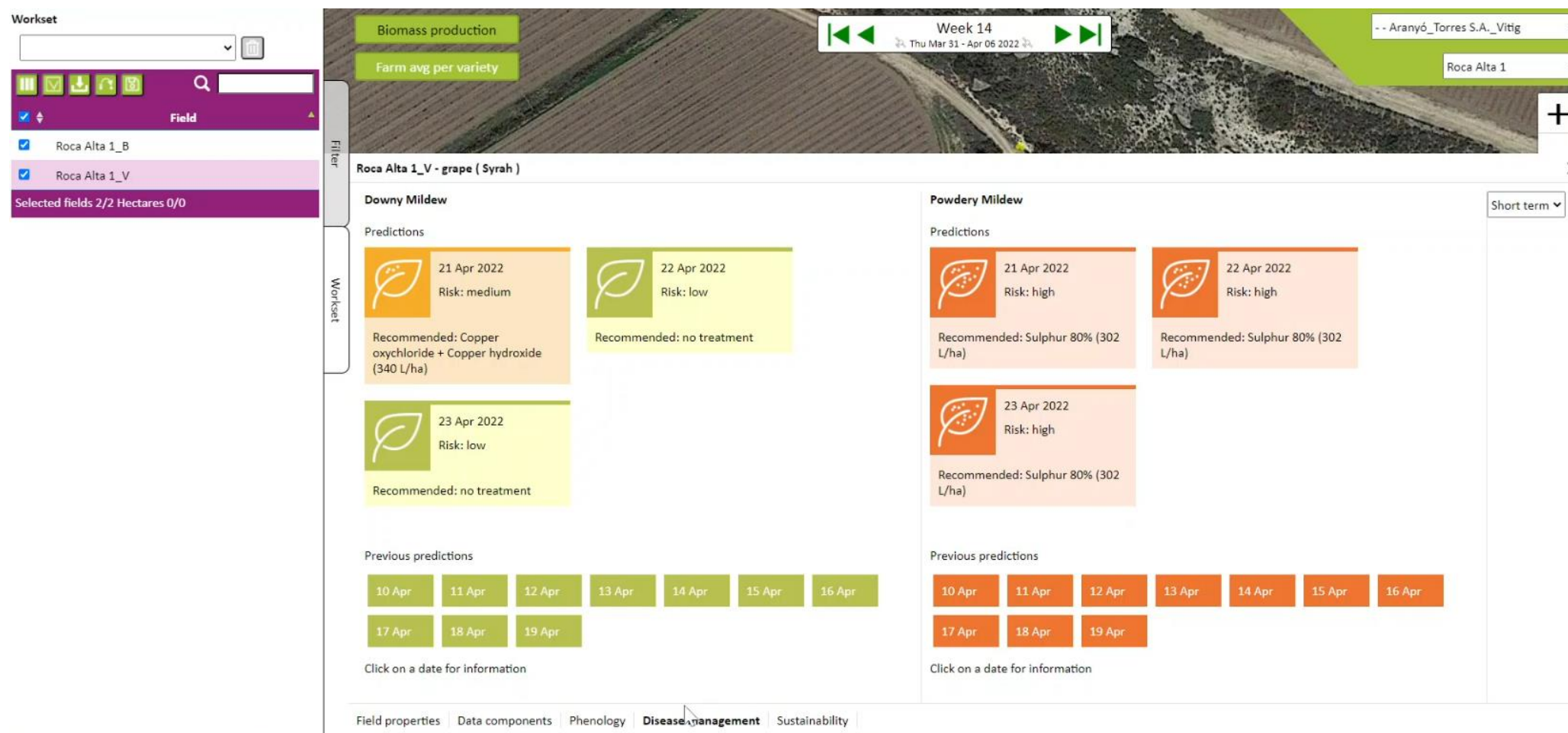


Phenological monitoring





Disease management

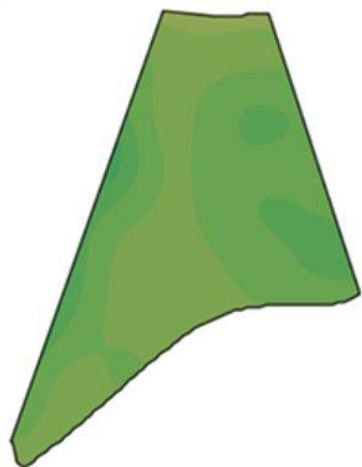




Crop Status

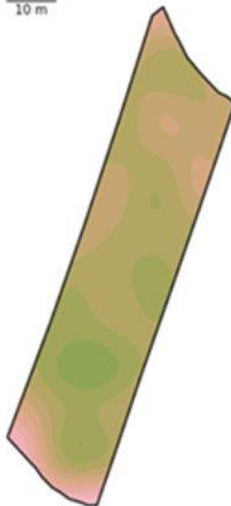
| Field | BF 256 | Field average | 17.86 |
|----------------|------------------------------|---------------|-------|
| Data component | Evapotranspiration (mm/week) | Min | 16.77 |
| Week | 24 (16/06/2021) | Max | 20.88 |
| Deviation | 0.93 | | |

10 m



| Field | BF 255_C | Field average | 11.38 |
|----------------|--------------------------------------|---------------|-------|
| Data component | Nitrogen in upper leaf layer (kg/ha) | Min | 5.61 |
| Week | 14 (04/04/2021) | Max | 13.57 |
| Deviation | 1.58 | | |

10 m



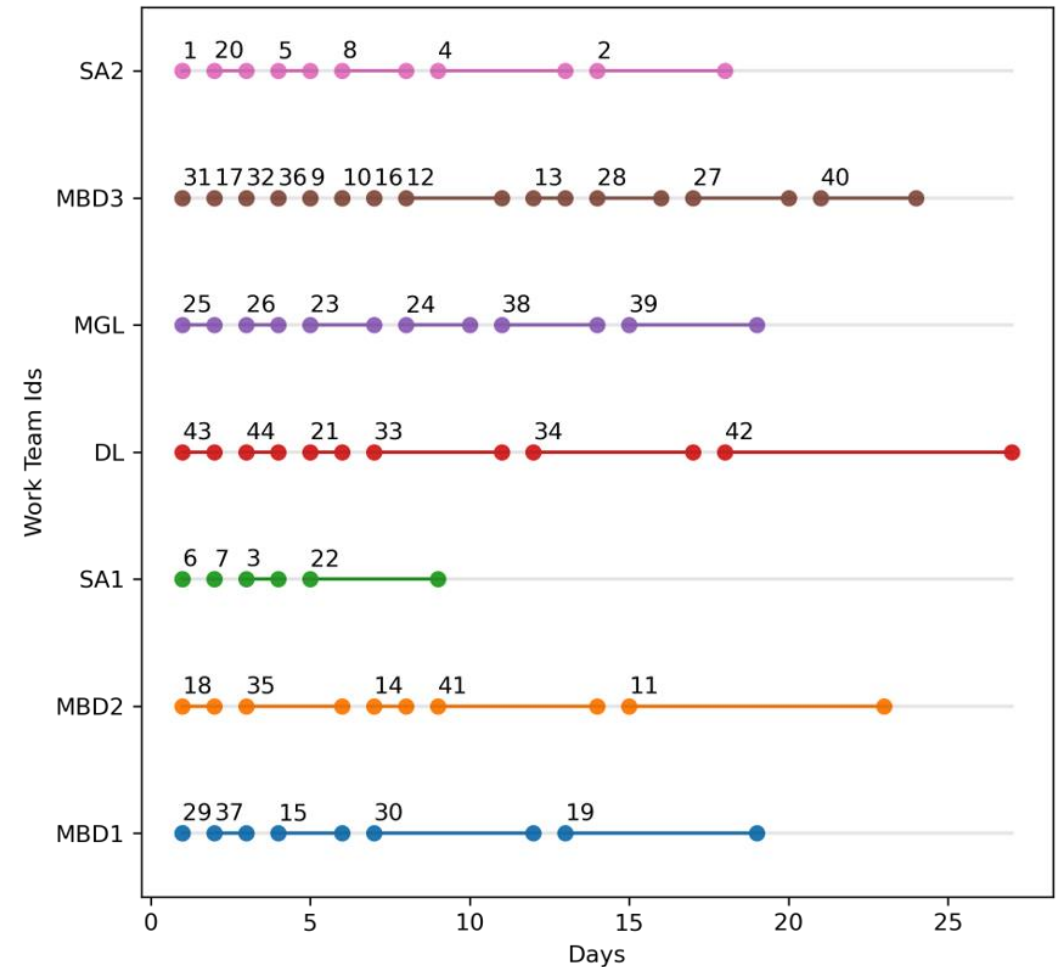
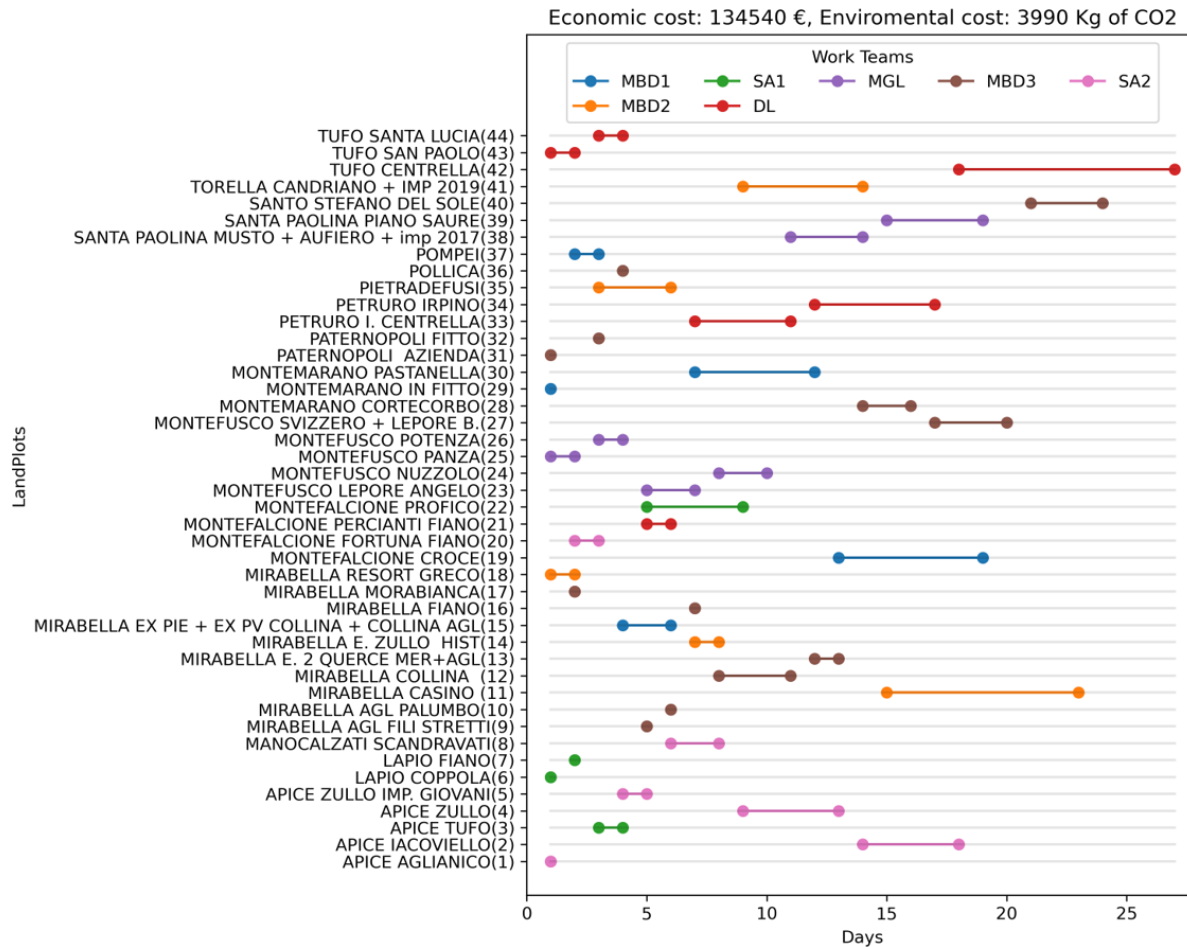
| Field | BF 105 | Field average | 1106 |
|----------------|----------------------------|---------------|------|
| Data component | Biomass production (kg/ha) | Min | 679 |
| Week | 21 (26/05/2021) | Max | 1436 |
| Deviation | 178 | | |

100 m



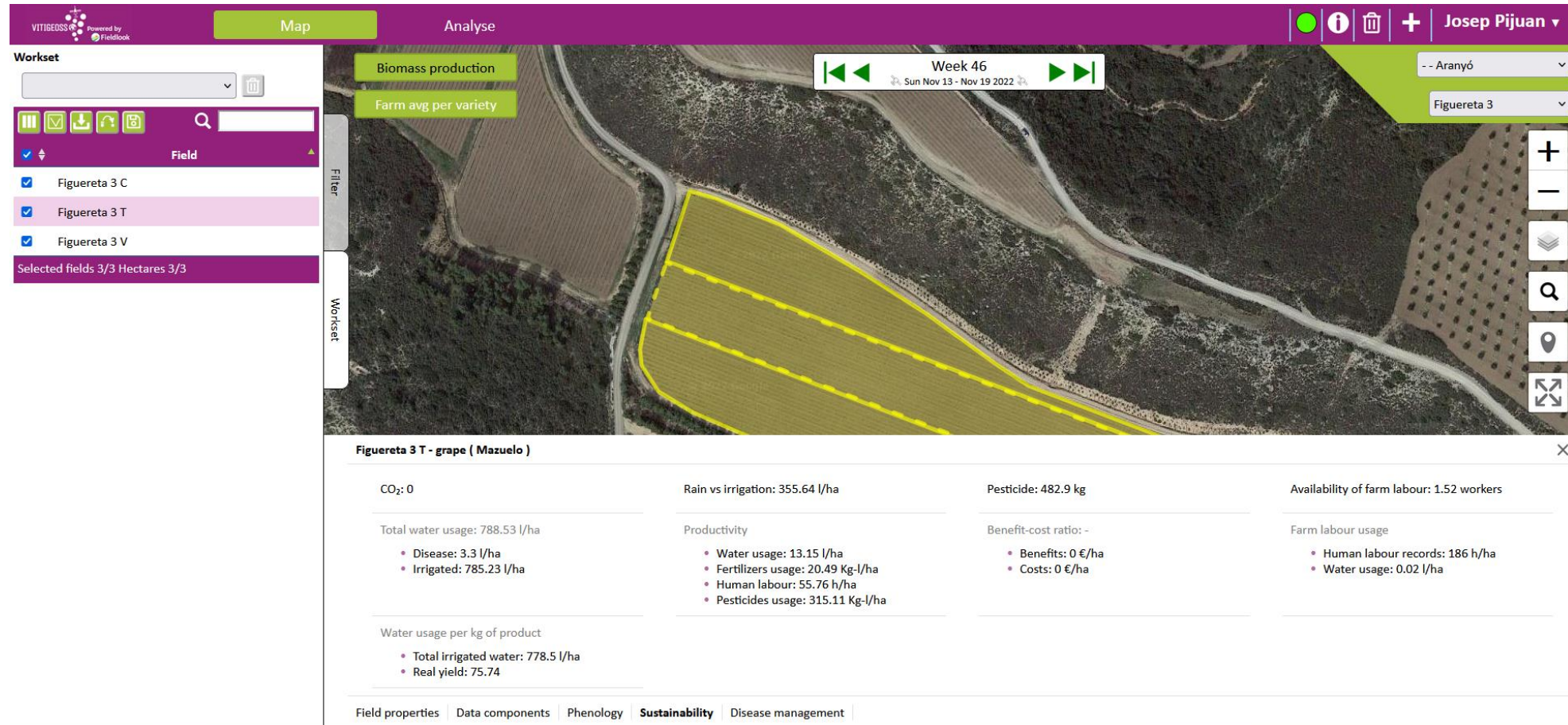


Business management





Sustainability indicators





VINEYARD INNOVATIVE TOOL
BASED ON THE INTEGRATION
OF EARTH OBSERVATION SERVICES
AND IN-FIELD SENSORS

Thank you!



 www.vitigeoss.eu

 [@vitigeoss_EU](https://twitter.com/vitigeoss_EU)

 info@vitigeoss.eu

A project coordinated by:

eurecat