



G-reqs: Towards an In-Situ Data Requirements Model for GEO

Joan Maso

CREAF



Learn more here:



<https://g-reqs.grumets.cat/>



ATHENS 7-9 DECEMBER 2022





Future GEO

GEO so far

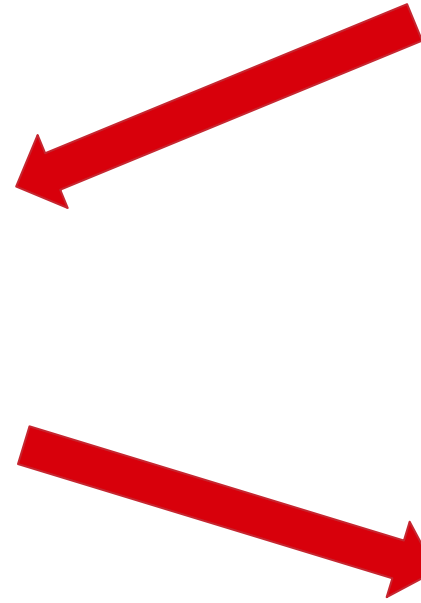
- Objective: Sorting the EO resources available
- Focus on Remote Sensing
- GEO yellow pages: A catalogue of providers
- GEO portal: A catalogue of existing offerings

Proposed evolution GEO

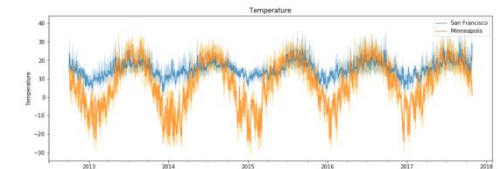
- Objective: Responding user needs
- Focus on In-situ data
- Knowing the needs and requirements of the Work Plan Activities
- G-Reqs: A Database to record needs and requirements in a formal way



GEO users' needs for in-situ data are diverse



Data





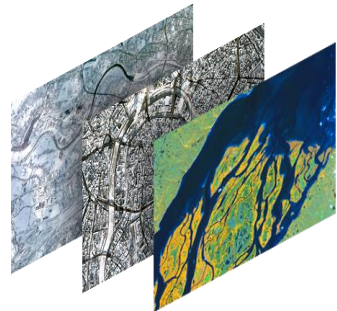
Parameterize requirements



– *Topic*



– Quality



– *Area*



– Timeliness





and we call it affectionally...

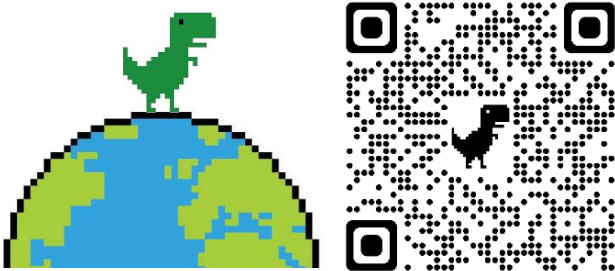
G-reqs





It looks like it, but
it is not a survey!

It is an interface to
capture in-situ data
requirements



Takes only 5 minutes to populate

ATHENS 7-9 DECEMBER 2022

Capturing requirements G-Req. Model

In order to know about the in-situ data that the G-Req. database model. The model stands for the responder into specifying precisely details of users (e.g. scientists, modellers, companies) purpose in-situ datasets.

This form is designed to test and consolidate the model, gather the first set of reference requirements, including inter alia:

- evolve the Copernicus In Situ Component requirements arising from GEO related activities;
- support the creation of a database of in-situ data cases;
- develop recommendations and best practices for in-situ data.

Documenting this form would require an in-situ data.

The InCASE project is supported by EEA contribution to GEO and EuroGEO.

This work is at an early stage and the G-Req. will evolve based on applied use cases.

Need

A Need refers to a problem or issue that needs to be addressed.

A Need could be:

- calibration, validation or comparison of in-situ data;
- scientific research question, a decision support tool;
- monitoring the evolution of an indicator;
- other.

This section helps to specify ONE concrete in-situ requirement (in the following section you can use this form several times)

Are you representing a GEO Initiative Need? (Named EntrustedEntity in the G-Req. Model)

- ☐ GEO Initiative
- ☐ Project
- ☐ In-situ Data Infrastructure Provider
- ☐ Organisation
- ☐ Other: _____

Provide the name of the organization

Your answer _____

Requirement 1

A Requirement is a concrete technical description of the properties of a potential in-situ dataset that will fulfil the Need.

Please, focus on the requirements of a single potential in-situ dataset.

* Due to limitations on Google Forms, this section is designed for describing a single requirement. If the Need has generated more than one requirement, more Requirement sections will follow for you to populate.

Considering the Need expressed, can you provide a short name for the in-situ data requirement? (e.g. Water Flow in Greece)

Your answer _____

Provide a short description that will help in better understand the in-situ data requirements?

Your answer _____

What are the essential variables, if any, related to the in-situ data requirement?

Your answer _____



Help us by capturing requirements!

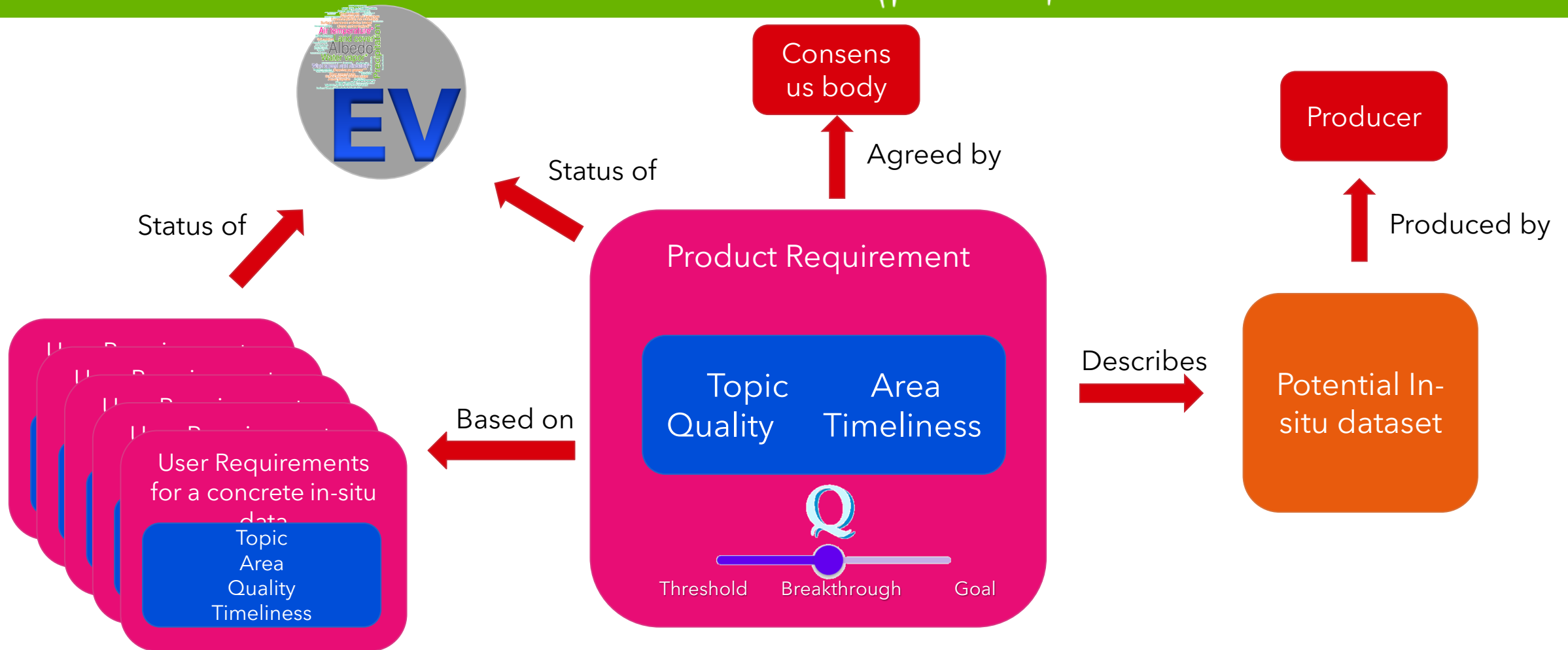


- Are you a in-situ data user?
- G-reqs corner next to the registration desk.
- We can help you to formulate your requirements
- We have an small gift for you



Questions and reports

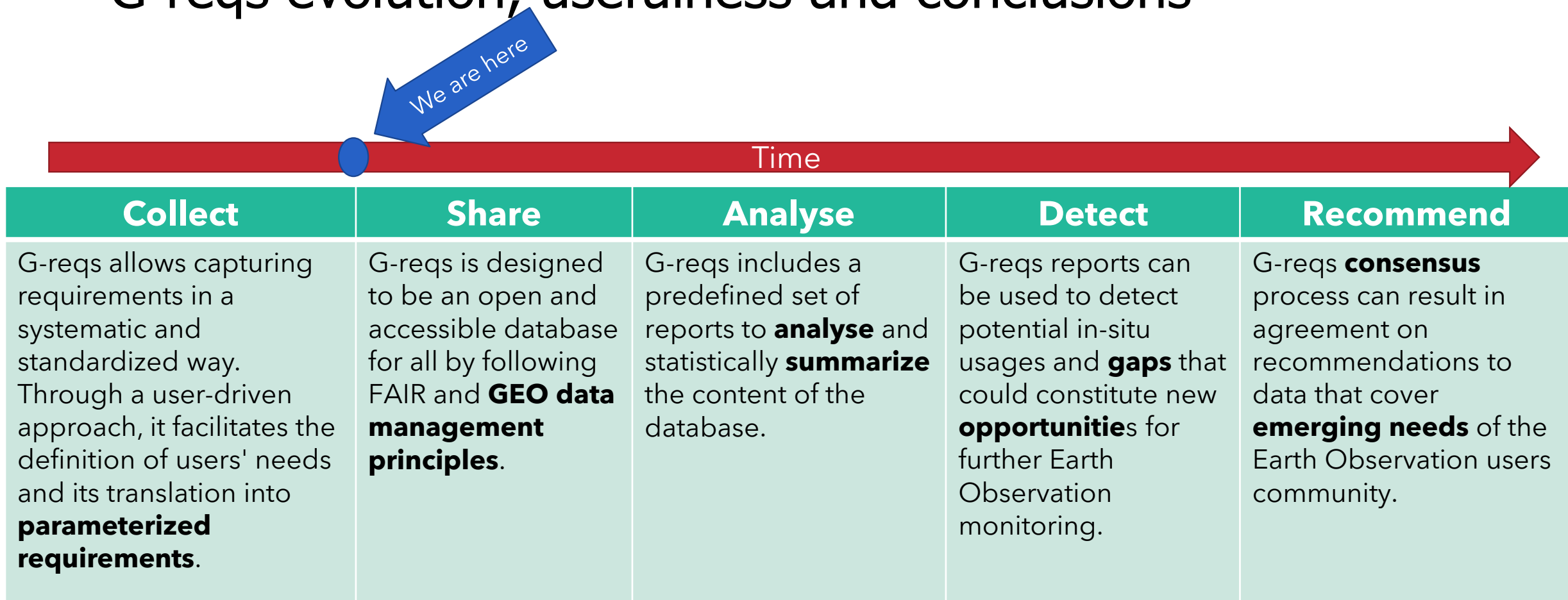
- Once we have gathered enough reqs. we will be able to formulate questions such as:
 - What in-situ dataset is required from more GEO work plan activities
 - What GEO work plan activity has more unfulfilled requirements
 - How many GEO work plan activities has unfulfilled requirements
 - What SBA could benefit more for a new in-situ dataset
 - What is the distribution/proportion of in-situ reqs. by need type (Remote sensing Cal/Val|Scientific question|Commercial product|Decision making|Policy monitoring)
 - What is the distribution/proportion of in-situ reqs. by Essential Variable



To product requirements



G-reqs evolution, usefulness and conclusions





Thanks.

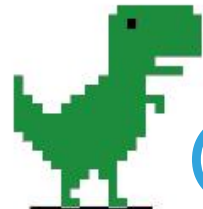
Joan Maso
CREAF



CREAF



SEVERO
OCHOA
EXCELLENCE



G-reqs



BTW: *Help us by capturing requirements!*

- Are you a in-situ data user?
- G-reqs corner next to the registration desk.
- We can help you to formulate your requirements
- We have an *small* gift for you